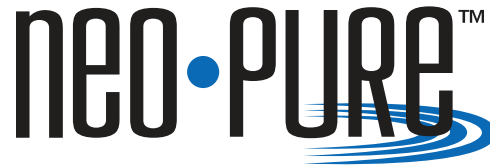


# Multi-Cartridge Filter Housings

## 4 and 5 Round Series



## Applications

- Chemicals
- Cooling Tower Filtration
- Desalination Prefiltration
- Electronics
- Food and Beverage
- Oil / Gas
- Paints / Inks / Coatings
- Paper and Pulp
- Power
- Water



## Residential/Commercial/Industrial Filtration Applications

### Standard Features

- Manufactured in the USA
- Holds four or five cartridges from 10" to 40" lengths for optimal choice of flow rates
- Heavy-duty 304L or 316L stainless steel construction for maximum durability and corrosion resistance
- V-band clamp or swing bolt closures for quick and easy cartridge change-outs and secure sealing
- Universal seal cups and compression plates accept DOE and 222/FLAT or FIN cartridges – standard on all filter housings
- 1/4" gauge port on body – standard on all filter housings
- FNPT inlet and outlet connections – standard on 4, 5 and 7 round

### Product Specifications

#### Maximum Operating Pressure

150 psig (10.3 bar) @ 300° F (149° C) - Standard

250 psig (17.2 bar) @ 300° F (149° C) - Optional

#### Connections

Inlet/Outlet: Standard – 2" FNPT

Optional: MNPT or BSP fittings; RF flanges,

Sanitary ferrules or grooved fittings

Drain Ports: 1/2" FNPT

Vent Ports: 1/4" FNPT

#### Materials of Construction

Head/Shell/Connections: 304L or 316L stainless steel

Closure: Clamp – 304L stainless steel

Swing bolts – zinc plated steel

Vent and Drain Plugs: 304L or 316L stainless steel

#### Gaskets

Standard: Buna N (FDA grade)

Optional: EPR, silicone, Teflon encapsulated silicone, Viton

#### Finish

Poly-coat on exterior surfaces

Optional: 3M™ coating, electropolish, glass bead or passivate

#### Cartridge Type

DOE style cartridges (maximum 2-3/4" OD) OR

222/FLAT or FIN cartridges – standard on all filter housings

#### Custom Options

Available in ASME "U" Code specifications, or built to ASME code with no stamp, for commercial and industrial filtration

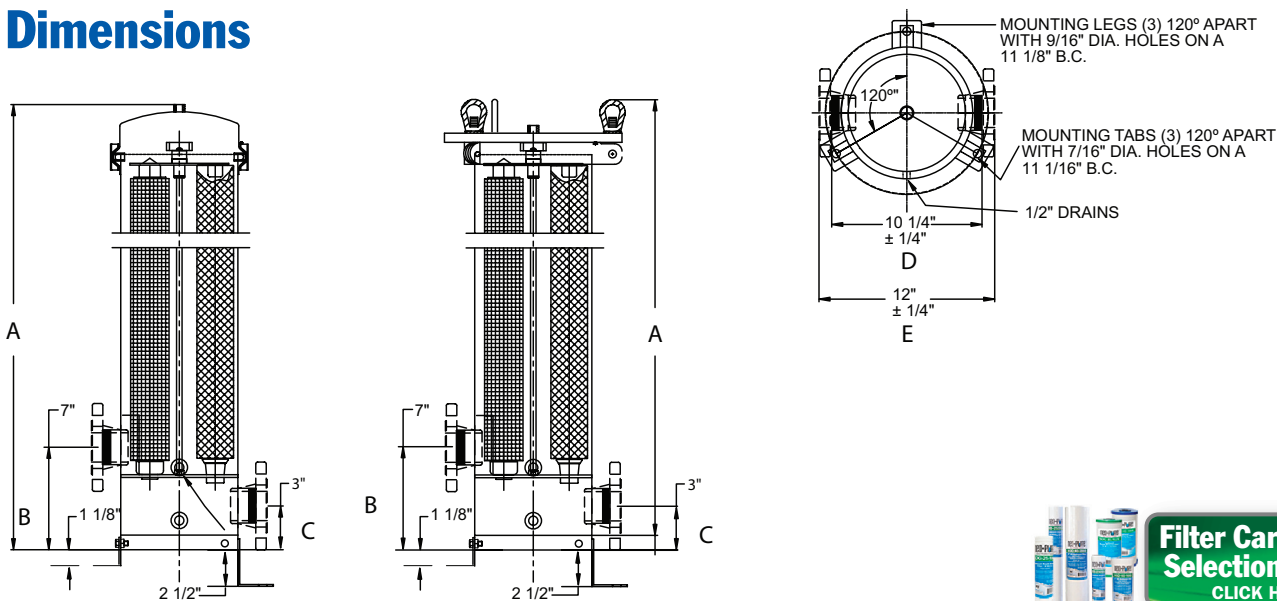
MODEL	QUANTITY (LENGTH) OF CARTRIDGES +	RATED FLOW CAPACITY* GPM (LPM)	MAXIMUM DIAMETER CARTRIDGE	CLAMP STYLE	SWING BOLT STYLE					
				A	A	B	C	D	D	E
BCM4X1/BCM5X1	4/5 (10")	28 (106) / 35 (132)	2-3/4"	20-7/8" (53.0 cm)	22-1/4" (50.3 cm)	7" (17.8 cm)	3" (7.6 cm)	10-1/4" (26.0 cm)	12" (30.46 cm)	
SBM4X1/SBM5X1	4/5 (10")	28 (106) / 35 (132)	2-3/4"	20-7/8" (53.0 cm)	22-1/4" (50.3 cm)	7" (17.8 cm)	3" (7.6 cm)	10-1/4" (26.0 cm)	12" (30.46 cm)	
BCM4X2/BCM5X2	4/5 (20")	56 (212) / 70 (285)	2-3/4"	30-7/8" (78.4 cm)	32-1/4" (81.9 cm)	7" (17.8 cm)	3" (7.6 cm)	10-1/4" (26.0 cm)	12" (30.46 cm)	
SBM4X2/SBM5X2	4/5 (20")	56 (212) / 70 (285)	2-3/4"	30-7/8" (78.4 cm)	32-1/4" (81.9 cm)	7" (17.8 cm)	3" (7.6 cm)	10-1/4" (26.0 cm)	12" (30.46 cm)	
BCM4X3/BCM5X3	4/5 (30")	84 (318) / 105 (397)	2-3/4"	40-7/8" (103.8 cm)	42-1/4" (107.3 cm)	7" (17.8 cm)	3" (7.6 cm)	10-1/4" (26.0 cm)	12" (30.46 cm)	
SBM4X3/SBM5X3	4/5 (30")	84 (318) / 105 (397)	2-3/4"	40-7/8" (103.8 cm)	42-1/4" (107.3 cm)	7" (17.8 cm)	3" (7.6 cm)	10-1/4" (26.0 cm)	12" (30.46 cm)	
BCM4X4/BCM5X4	4/5 (40")	112 (424) / 140 (530)	2-3/4"	50-7/8" (129.2 cm)	52-1/4" (132.7 cm)	7" (17.8 cm)	3" (7.6 cm)	10-1/4" (26.0 cm)	12" (30.46 cm)	
SBM4X4/SBM5X4	4/5 (40")	112 (424) / 140 (530)	2-3/4"	50-7/8" (129.2 cm)	52-1/4" (132.7 cm)	7" (17.8 cm)	3" (7.6 cm)	10-1/4" (26.0 cm)	12" (30.46 cm)	

+ Housings will accept cartridge lengths: 10" = (9-3/4" or 10"), 20" = (19-1/2" or 20"), 30" = (29-1/4" or 30") and 40" = (39" or 40")

\* Based upon 7 gpm per 10" length with a 25 micron wound cartridge at 2 PSID clean and viscosity of 1 cps. Flow rates are for guidelines only.

Actual flow rates are based on fluid, viscosity, cartridge type, micron ratings and other factors.

## Dimensions



## Ordering Guide (Example: BCM4X3-316L-226-2FC-PG-E)

MODEL	CARTRIDGE LENGTH	MATERIAL /FINISH	CARTRIDGE CONFIGURATION	INLET /OUTLET	CONNECTION TYPE	OPTIONS	GASKET
BCM4X = 4 cartridges BCM5X = 5 cartridges (V-Band Clamp Closure)	1 = 10", 9-7/8", 9-3/4"	Blank = 304L (Standard) 316L = 316L 304LC = 304L Coated 316LC = 316L Coated 304LEP = 304L Electropolished	Blank = DOE (Standard) 226 = 226 Fin/ Flat	2 = 2" (Standard up to 7 round)	FT = FNPT (Standard) MT = MNPT Male Thread FC = Female Couplings	Blank = Mounting Legs, Gauge Ports (Standard) PG = Pressure Gauges (2) P = Passivate U = ASME Code "U" Stamp NS = Built to ASME Code/no Stamp HP = High Pressure (up to 250psi)	Blank = Buna N (Standard) E = EPR S = Silicone V = Viton T = Teflon Encapsulated Silicone
SBM4X = 4 cartridges SBM5X = 5 cartridges (Swing Bolt Closure)	2 = 20", 19-1/2"	304L = 304L 316L = 316L 304LEP = 304L Electropolished		3 = 3" 4 = 4" 6 = 6" 8 = 8"	BT = BSP Tapered BP = BSP Parallel FL = Flange TC = Ferrules GF = Grooved Fittings		
	3 = 30", 29-1/4"	316LEP = 316L Electropolished					
	4 = 40"	304LGB = 304L Glass Bead					

\*ASME Code "U" Stamped housings are only available with Swing Bolt Closures.



9450 SW Gemini Dr, ECM #83358, Beaverton, OR 97008  
Tel 855.896.3525 · Fax 866.409.9622  
www.neologicsolutions.com · info@neologicsolutions.com  
STUART, FL · BEAVERTON, OR · GREENVILLE, SC · SAN DIEGO, CA

### QUESTIONS?

Ask one of our Service Representatives:  
Mon-Fri 8a-8p, Sat 8:30a-4:30p EST

